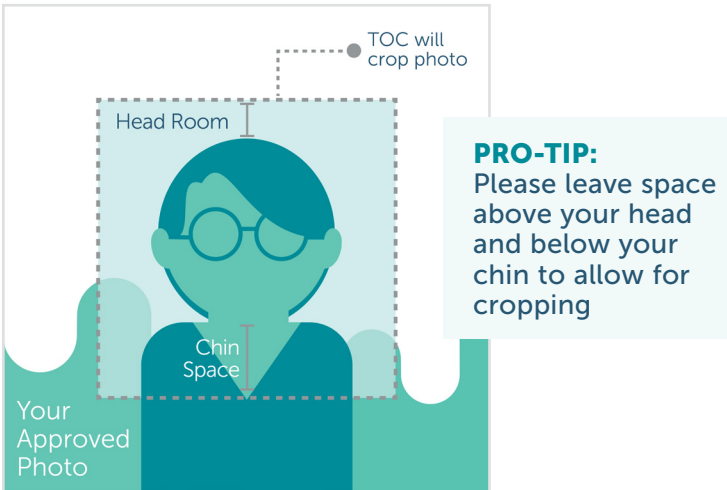


Please follow these guidelines for your photo submission

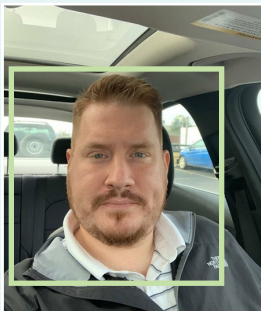
The Oregon Clinic has an automated cropping tool to ensure proper photo size



- Use a recent photo (within 6 months)
- No filters
- Employee should be the only subject in the photo
 - No pets/children
 - No friends/family

- Employee's face should be in focus
 - No shadows on face
 - No sunglasses
 - Both eyes must be visible in photo
- Wear appropriate/professional or business casual attire
 - Tops/shirts worn for photos must meet Employee's clinic's dress code standards
- Professional facial expression
 - Smile or neutral expression
 - No grimacing, frowning, etc
- Use your preferred background
 - No company logos or branding (except TOC!)
 - No political messages
- Hats & headbands allowed if employee's face is not obscured
 - No bandanas, no face masks
- No hand gestures in photo

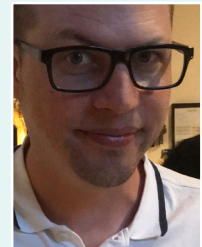
👍 Acceptable Photos Examples:



👎 Unacceptable Photos Examples:



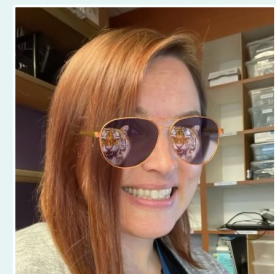
No pets/children



Zoomed in too close, whole head preferred



No bandanas, no face masks



No sunglasses, both eyes must be visible